

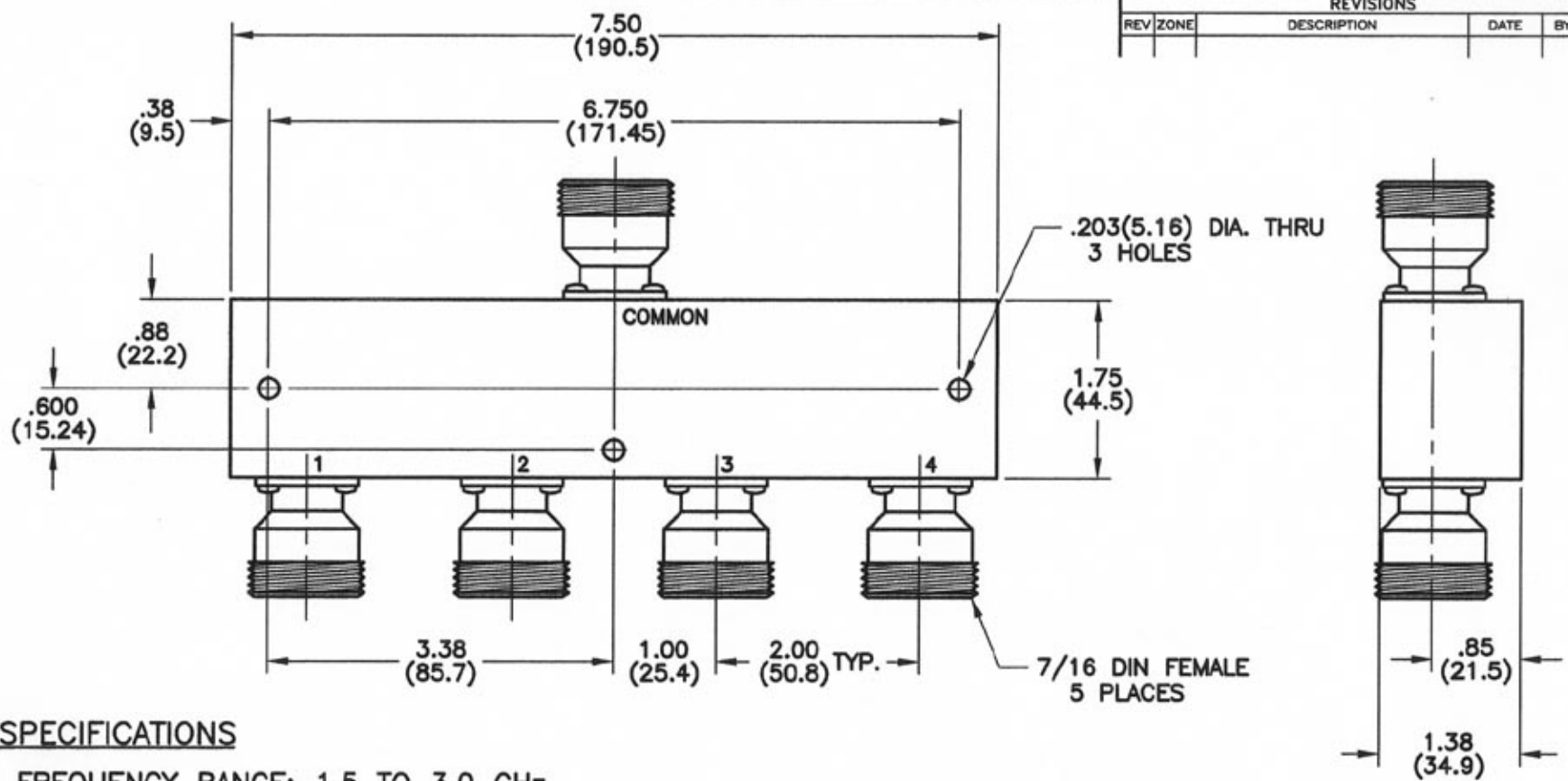
4

3

2

1

REVISIONS					
REV	ZONE	DESCRIPTION	DATE	BY	ECO



SPECIFICATIONS

FREQUENCY RANGE: 1.5 TO 3.0 GHz

INSERTION LOSS: 0.6 dB MAX.

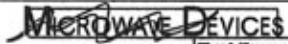
ISOLATION: 20 dB MIN.

VSWR: COMMON PORT - 1.50:1 TYP.

OUTPUT PORTS - 1.40:1 TYP.

POWER: 30 WATTS AVG. W/ LOAD VSWR 1.20:1 MAX.

DIMENSIONS: INCHES
(MILLIMETERS)

TOLERANCES		THE INFORMATION CONTAINED IN THIS DOCUMENT IS THE PROPERTY OF MICROWAVE DEVICES, INC. AND IS PROPRIETARY. IT IS NOT TO BE COPIED OR USED FOR ANY PURPOSE OTHER THAN AS INSTRUCTED, IN WRITING, BY MICROWAVE DEVICES, INC.	 <small>(RF and Microwave Components)</small>			
DEC.XX ± .03	FRAC ±					
.XXX ± .010	ANG ±					
MATERIAL		SIGNATURES	DATE	OUTLINE, POWER DIVIDER MODEL 4PD2.25-D7		
FINISH		DR G.V.Cothren	2-9-07			
APPD		CHK		CAGE	SIZE	DRAWING NO.
APPD		APPD		60674	B	900647-4
CONTACT: MICROWAVE DEVICES - 1150 N. GRAHAM RD. FRANKLIN, IN 46131		DIMENSIONS ARE IN INCHES UNLESS OTHERWISE SPECIFIED.		DRAWING SCALE 1=1 SHEET 1 OF 1		

4

3

2

1